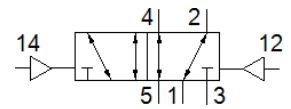
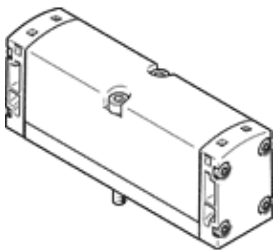


# pneumatic valve VSPA-B-B52-A1

Part number: 546714

FESTO

Width 26 mm



## Data sheet

| Feature                                   | Value   |
|---|---|
| Valve function                            | 5/2 bistable  |
| Type of actuation                         | pneumatic   |
| Width                                     | 26 mm   |
| Standard nominal flow rate                | 1,100 l/min   |
| Operating pressure                        | -0.9 ... 16 bar   |
| Design structure                          | Piston slide  |
| Nominal size                              | 9 mm  |
| Exhaust-air function                      | throttleable  |
| Sealing principle                         | soft  |
| Assembly position                         | Any   |
| Conforms to standard                      | ISO 15407-1<br>VDMA 24563   |
| Type of piloting                          | direct  |
| Flow direction                            | reversible  |
| Overlap                                   | Positive overlap  |
| Pilot pressure                            | 2 ... 10 bar  |
| Flow rate of valve                        | 1,400 l/min   |
| Flow rate of valve on individual sub-base | 1,100 l/min   |
| Flow rate of pneumatically linked valve   | 1,100 l/min   |
| Switching time reversal                   | 10 ms   |
| Operating medium                          | Compressed air in accordance with ISO8573-1:2010 [7:4:4]                    |
| Note on operating and pilot medium        | Lubricated operation possible (subsequently required for further operation) |
| Corrosion resistance classification CRC   | 0 - No corrosion stress   |
| Medium temperature                        | -10 ... 60 °C   |
| Relative air humidity                     | 0 - 90 %  |
| Pilot medium                              | Compressed air in accordance with ISO8573-1:2010 [7:4:4]                    |
| Ambient temperature                       | -10 ... 60 °C   |
| Max. tightening torque, valve mounting    | 1.8 ... 2.2 Nm  |
| Product weight                            | 180 g   |
| Pilot air port 12                         | Connection plate size 26 mm, according to ISO 15407-1                       |
| Pilot air port 14                         | Connection plate size 26 mm, according to ISO 15407-1                       |
| Pneumatic connection, port 1              | Connection plate size 26 mm, according to ISO 15407-1                       |
| Pneumatic connection, port 2              | Connection plate size 26 mm, according to ISO 15407-1                       |
| Pneumatic connection, port 3              | Connection plate size 26 mm, according to ISO 15407-1                       |
| Pneumatic connection, port 4              | Connection plate size 26 mm, according to ISO 15407-1                       |
| Pneumatic connection, port 5              | Connection plate size 26 mm, according to ISO 15407-1                       |
| Materials note                            | Conforms to RoHS  |
| Material seals                            | NBR   |
| Material housing                          | Aluminium die cast  |
| Material screws                           | Steel<br>Galvanised   |